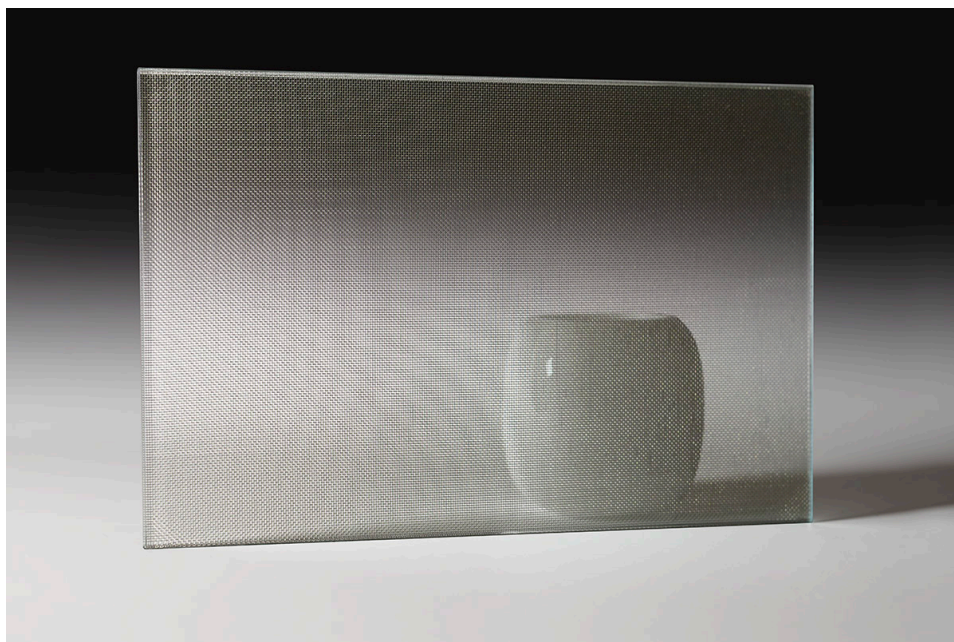


## Fine Mesh 55 Inox



The Fine Mesh collection offers a fusion of safety, functionality, and contemporary design. Metal meshes laminated between two glass panels bring texture, depth, and subtle transparency to interiors. They are ideal for partitions, railings, and other decorative elements, providing a visual impact while enhancing technical performance. Their versatility allows architects and designers to play with light, shadow, and patterns, while maintaining structural strength and elegance.

max. dimensions: 3100 x 1500 mm

thickness: 9, 11, 13, 17, 21 mm

safety treatment: laminated, tempered and laminated

glass type: low iron, float, blue, bronze, grey, green

processing options: drilling holes, cnc cutouts, shaping

applications: balustrade, doors, dividers, feature walls, partitions

cleaning: Laminated glass can be cleaned with liquid cleaners and paper towels, or soft clothes. Liquid cleaners without ammonia are recommended. Avoid all abrasive cleaning materials.