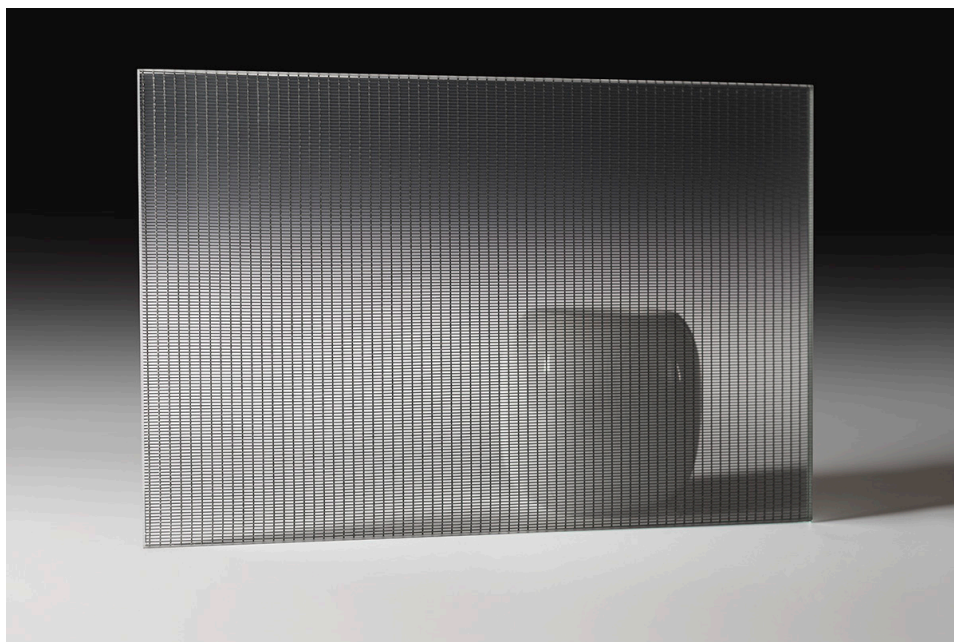


## Multiple Silver



Metal Mesh glass incorporates a variety of woven metal meshes laminated between two layers of glass. The decorative and aesthetic qualities — from finely woven gauze to thicker woven fabrics — are preserved while benefiting from the structural strength and practicality of glass. This product is ideal for structural, decorative, or acoustic applications in interiors, and can be used for screens, partitions, or wall coverings.

Metal mesh laminated glass is available with three different types and colors of mesh: silver, gold, and bronze.

Combined with our other techniques, including lamination, mirroring, and digital printing, metal mesh laminates offer an endless range of new creative possibilities.

max. dimensions: 3100 x 1500 mm

thickness: 9, 11, 13, 17, 21 mm

safety treatment: laminated, tempered and laminated

glass type: low iron, float, blue, bronze, grey, green

processing options: drilling holes, cnc cutouts, shaping

applications: balustrade, doors, dividers, feature walls, partitions

cleaning: Laminated glass can be cleaned with liquid cleaners and paper towels, or soft clothes. Liquid cleaners without ammonia are recommended. Avoid all abrasive cleaning materials.